

# Wood Fired Pellet Barbecue



**DGI** Dansons Group Inc.  
Responsible Resource Development  
"The Innovators."

**CCI** Canadian Comfort Industries  
A Vanderweil Company  
"The Complete Package"

## KENTWOOD - BLACK

CCI Model GKWWBL  
UPC 684678080504

### Standard Features Benefits

- Heavy Double-Lined Hood
  - Gives better heat retention and allows for all season cooking.
- Convection Cooking
  - Even cooking eliminates the need for a rotisserie. Retains natural juices.
- 2 Cast Iron Grills  
408 sq. in. Cooking Area
  - Long life and easy maintenance, cast iron reduces cooking temperatures because it holds heat.
- Flavor Guard Cooking Grate  
One-Piece Stainless Steel
  - Enhances amount and quality of smoke. Eliminates flare-ups and improves heat response and distribution.
- Full Range Temperature Control
  - Heat output from 200 to 600 degrees F.\* (to approx. 45,000 BTUs)  
No preset heat outputs.
- Independent Smoke Control
  - Allows you to control the flavor. Hot smoke at approx. 200 degrees F.
- 300 Watt Electric Auto-Igniter
  - Easy push-button start. No messy starters to use or buy.
- Engineered Top-Feed Auger System
  - Time proven design provides trouble-free even wood pellet delivery.
- Conveniently Located Hopper
  - Easy to fill at any time, 10 lb. capacity.
- Front Ash Drawer
  - Easy ash and grease removal.
- Two-sided Stainless Steel Shelf
  - Large working area with easy clean-up.
- Heavy Duty Casters
  - Easy to move on any surface, and the casters lock in place.



(comes with 20 lbs. of wood flavored pellets)

### Specs

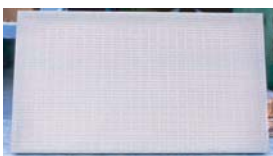
Height: 48" Width: 46" Depth: 30"  
Weight: 191 lbs. (actual), approx. 280 lbs. (shipping)  
Power: 110 volt, grounded  
Quality construction made of stainless steel and aluminized steel.

### Options

- **Door** - Black or Stainless Steel  
Encloses and protects a spacious storage area below your grill.



- **Barbecue Cover** - Custom Fit and Embroidered 600 denier polyester canvas, double stitched, UV protected, PU (poly urethane) interior, c/w tightening strap



- **GrillMate** - Speciality Coated Stainless Steel Construction improves heat distribution, prevents grease corrosion, and encourages more savory smoke flavor.

**Sear**

**Grill**

**BBQ**

**Roast**

**Smoke**

**Bake**

\* heat output dependent upon weather conditions and fuel quality  
Due to ongoing product development, all products may not be exactly as illustrated.

Dansons 03.03.05